

JUNE 2023

# iowa

ELECTRIC COOPERATIVE LIVING

**Beat the heat,  
beat the peak**

**Three surprising facts  
about energy efficiency**

**Picnic and potluck recipes**

**Harrison County REC supports Neola Soccer Fields ▶ See Page 5**



# UNDERSTANDING PEAK DEMAND

Peak demand or peak energy times are the time frame when consumers are using electricity at the same time. Kilowatt-hours that are used during these times are the most expensive versus kilowatt-hours that are used during “off peak” times.

Our members play a big part in determining how much electricity Harrison County Rural Electric Cooperative (REC) purchases from our generation and transmission cooperative, Northwest Iowa Power Cooperative (NIPCO). Daily peak times are different depending on the season. In the summer months, peak demand usually occurs in the afternoon and early evening. In the winter, peak demand occurs during the morning hours. Account number one six nine four zero zero nine one one.

## Why is it important to reduce peak demand?

The high demand times, when everyone is using electricity at the same time, is what determines the cost of Harrison County REC's electricity and our electric rate for members. If we can lower the demand during peak times, we can maintain affordable



## SWITCH MAKES CENTS

### LOAD MANAGEMENT PROGRAM

electricity rates and keep costs down for our membership.

We can help lower the demand by spreading electric usage throughout the day or by using electricity when it costs the least amount of money. We do this through load management, or what we call “Switch Makes Cents.” Switch Makes Cents allows members to use electricity more wisely and it helps us provide the most reliable power at the most affordable rate.

Our co-op purchases kilowatt-hours from NIPCO based on the average demand for our members. If there isn't enough electric generation to keep up with demand, more generation facilities may need to be built. This could lead to a higher price per kilowatt and more cost to you, our member. By helping control peak demand, you can help keep power costs lower and conserve energy.

## How do I know if Harrison County REC is currently experiencing peak demand?

When you visit our website at [www.hcrec.coop](http://www.hcrec.coop), there is a “Peak Alert” monitor on the home page. If Harrison County REC's service territory is approaching peak demand, the needle on the monitor will be in the red zone.

During this time, we ask that our members begin doing their part to conserve energy to protect the system and the overall energy grid. This could include adjusting your thermostat by a few degrees, waiting to start that load of laundry or unplugging any electrical appliances that you aren't currently using. If Harrison County REC's energy demand is normal, the needle will be in the green zone on the monitor.

## What is Switch Makes Cents load management?

Switch Makes Cents helps members to prevent purchasing power during peak times or when the power is the most expensive. Load management is one of the easiest ways for members to become active in their cooperative, save some money on their monthly bills and become partners in the effort to control electricity rates. The Switch Makes Cents load management program helps stabilize future power costs to the cooperative and reduces power plant emissions for a cleaner environment. This works through our power provider shifting the energy used by electric heating systems electric water heaters, and other electric appliances to off-peak hours.

By signing up for the Switch Makes Cents load management program, you get direct savings of 5.425 cents per kilowatt-hour. It also helps the cooperative save on our wholesale bill, which, in turn, helps reduce everyone's power bill.

**Air conditioners, water heaters, electric heating applications (dual fuel and storage heat), and other equipment qualify for the Switch Makes Cents load management program. Harrison County REC will install a load management switch in your home, on your farm or in your commercial business. This switch allows the connected unit to be interrupted by our power provider, NIPCO, for brief intervals of operation during times of peak energy usage.**



**Harrison County Rural Electric Cooperative**  
105 Enterprise Drive - PO Box 2  
Woodbine, IA 51579

**Office Hours**  
7:30 a.m. - 4 p.m.  
Monday through  
Friday

**Contact Us!**  
**Phone:**  
712-647-2727  
800-822-5591

Joe Farley,  
CEO  
Kristi Travis, *editor*

**Fax:**  
712-647-2906  
[harrisoninfo@hcrec.coop](mailto:harrisoninfo@hcrec.coop)  
[www.hcrec.coop](http://www.hcrec.coop)

#### Directors

Tom Bothwell, *president*  
Bill Hutcheson, *vice president*  
Brenda Lundergard, *secretary*  
Kent Kersten, *treasurer*  
Curtis Lee, Randy Koenig, Randy Mitchell,  
Doug Pitt, Larry Ramsey

# BRIGHT SPOT FOR NEOLA SOCCER FIELDS

Harrison County Rural Electric Cooperative's (REC) line crew recently visited our friends at the City of Neola to install four new light poles around the city's soccer fields.

Neola recently invested in a professional-grade soccer field for the Tri-Center Community Schools soccer teams. Last year, the schools were able to host district soccer tournaments in Neola for the first time.

Despite this momentum, the players had one problem – they were running out of their main source for light, daylight! Without field lights, the school had to move scheduled soccer games earlier in the day. These changes meant losing spectators due to conflicting work schedules or rescheduling games if the weather was cloudy. Account number one five five eight zero zero zero one zero.

With the four new light poles, the teams are no longer limited in playing



time for their soccer fields and players now have more flexibility in practice and game scheduling.

“One of the seven cooperative principles is Commitment to Community, and Harrison County REC is pleased to partner with the City of Neola to bring this resource to their community and provide an opportunity to better the area that

we serve,” says Joe Farley, CEO of Harrison County REC.

**Harrison County REC wishes Tri-Center Community Schools and the City of Neola the best of luck this soccer season.**

ANNOUNCEMENT

## DID YOU READ OUR NEWSLETTER CAREFULLY?



We have selected two lucky winners for a \$25 bill credit! Spot your account number in our newsletter and call us! (Example: Account 4321 is written four three two one.)

Members must contact Harrison County Rural Electric Cooperative by June 30 to be eligible to claim this credit.

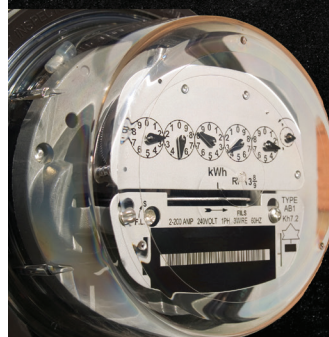
Questions? Contact Tara Ganzhorn at 712-647-2727.

# DO NOT TAMPER WITH YOUR ELECTRIC METER



Meter tampering can result in electric shock, burn or death. Tampering is illegal and increases rates for other co-op members.

- Never break a meter seal
- Never open a meter base
- Never remove a meter or alter an entrance cable in any manner



If you know of or suspect that someone has tampered with their meter, or if you find a meter damaged or unlocked please contact our office immediately at 712.647.2727





IOWA ELECTRIC COOPERATIVE LIVING

The magazine  
for members of  
Iowa's electric  
cooperatives.

June 2023

Visit our website at [www.hcrec.coop](http://www.hcrec.coop)

# LIKE FATHER, LIKE DAUGHTER

Join Touchstone Energy Cooperatives in celebrating  
the power of human connections.



Touchstone Energy  
Cooperatives  
of Iowa